

Mepilex® Border

Safetac®
TECHNOLOGY



The effective bordered foam dressing with Safetac® technology

- Minimizes pain and trauma at dressing changes^{1,2}
- Gentle adherence with better conformability and comfort

Safetac® technology layer

- Reduces pain and trauma during dressing changes¹
- Does not adhere to the moist wound bed, only to dry skin³
- Seals the wound margins and reduces risk of maceration⁴

Polyurethane backing film

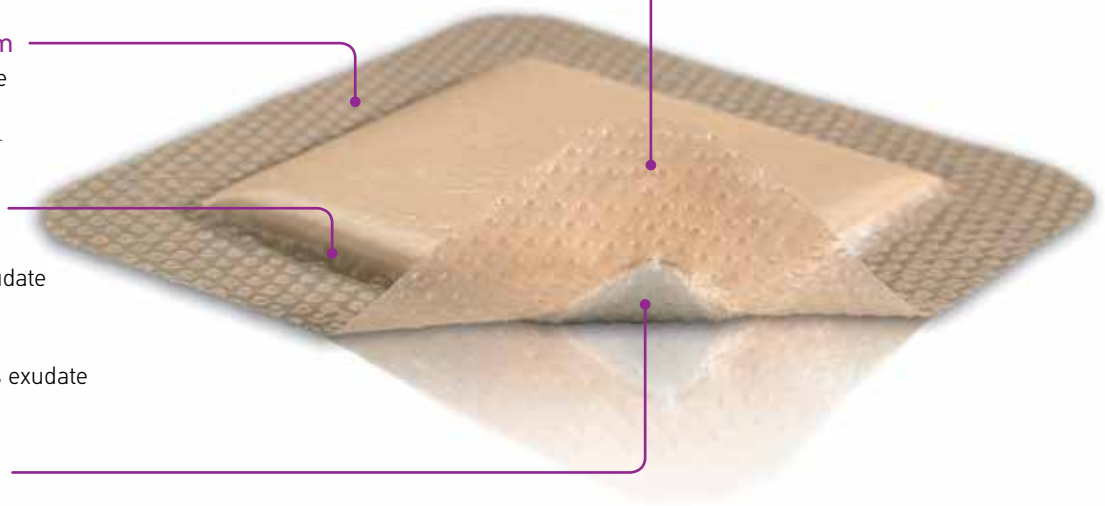
- Moisture vapor permeable
- Moisture proof
- Bacteria and viral barrier†

Multi-layered absorbent foam pad

- Retention layer stores exudate
- Non-woven layer spreads and retains fluid
- Absorption layer transfers exudate to layers above

Improved fluid handling

- Reduces risk of leakage and maceration



Safetac® technology. Less pain and less trauma.

Safetac® technology is a patented adhesive technology that minimizes pain to patients and trauma to wounds. Safetac® technology is available exclusively on Mölnlycke Health Care dressings, including Mepilex® wound care dressings, Mepitel®, Mepiform® and Mepitac®.

For more information visit www.molnlyckeUSA.com

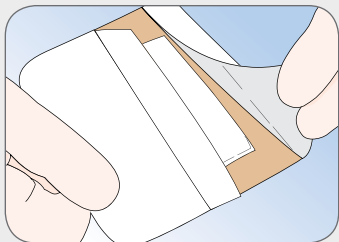


Skin stripping may occur with traditional adhesive

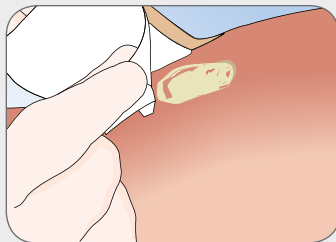


Minimal skin stripping with Safetac® technology

How to use Mepilex® Border



Clean the wound area. Skin barrier products not necessary. Remove the release film.



Apply the adherent side to the wound. Do not stretch.



Foot ulcer



Pressure ulcer



Sacral pressure ulcer

How Mepilex® Border works

Mepilex Border has excellent fluid handling properties because of the following:

- Safetac® technology layer – seals around wound/incision margins
- Absorption layer – ensures quick and effective absorption
- Spreading layer – spreads the exudate into the retention layer
- Retention layer – impedes exudate from being pushed back into the skin to reduce the risk of maceration
- Backing film – highly breathable; moisture and bacteria proof to protect the wound from outer contamination

Benefits of Mepilex® Border

- Atraumatic to the wound and surrounding skin on removal
- Does not adhere to moist wound
- Adheres gently and securely to dry, intact surrounding skin
- Maintains a moist wound environment
- Minimizes the risk of maceration
- Designed for ease of use and patient comfort
- Moisture proof and bacteria proof film backing

Areas of use

- Treatment of moderate to highly exuding wounds such as:
 - Pressure ulcers
 - Leg and foot ulcers
 - Traumatic wounds (e.g., skin tears and secondary healing wounds)
- Aid in the prevention of skin damage
- Surgical incisions

Wear time: Up to 7 days

Note

In case of signs of infection, consult a health care professional for treatment.

References:

1. White R., A Multinational survey of the assessment of pain when removing dressings. Wounds UK 2008, Vol 4, No 1.
2. Dykes PJ et al. Effects of adhesive dressings on the stratum corneum of the skin. J Wound Care 2001; 10(2):7-10.
3. Dykes PJ. The effect of adhesive dressing edges on cutaneous irritancy and skin barrier function. J Wound Care 2007, 16(3):97-100.
4. Meaume S et al. A study to compare a new self adherent soft silicone dressing with a self adherent polymer Management, 2003.

Mepilex® Border Ordering Information†



Product Code	Size	Pcs/box	Pcs/case	HCPCS
295200	3" x 3" (7.5 x 7.5 cm)	5	70	A6212
295300	4" x 4" (10 x 10 cm)	5	50	A6212
295400	6" x 6" (15 x 15 cm)	5	50	A6213
295600	6" x 8" (15 x 20 cm)	5	45	A6213

Mepilex® Border post-op sizes†



295800	4" x 8" (10 x 20 cm)	5	35	A6212
295850	4" x 10" (10 x 25 cm)	5	35	A6212
295900	4" x 12" (10 x 30 cm)	5	25	A6213

Mepilex® Border Sacrum†



282000	7.2" x 7.2" (18 x 18 cm)	5	40	A6213
282055	7.2" x 7.2" (18 x 18 cm)	10	50	A6213
282400	9.2" x 9.2" (23 x 23 cm)	5	25	A6213
282455	9.2" x 9.2" (23 x 23 cm)	10	40	A6213

Mepilex® Border Heel†



283250	7.3" x 9.58" (18.5 x 24 cm)	5	40	A6212
--------	-----------------------------	---	----	-------

Mepilex® Border Flex†



283300	5" x 6.3" (13 x 16 cm)	5	60	A6212
283400	6" x 7.5" (15 x 19 cm)	5	45	A6213



Scan for more information

Socialize with us:



We're here to help you, when you need us. Call your Mölnlycke Health Care Representative or Regional Clinical Specialist.

1-800-843-8497 | www.molnlyckeUSA.com | info.woundcare@molnlycke.com | 5550 Peachtree Parkway, Suite 500, Norcross, GA 30092