

GE Healthcare



MAC 2000 ECG Analysis System
Streamlined for your hospital



Simple is
smart.

Complex hospital environments demand simple solutions. Equipment that simply works, every time. Technology that delivers clear, accurate data in simple ways. Intuitive tools that are simple to use. And support you can count on without question.

Simple.

And smart. The new MAC* 2000 from GE Healthcare helps the clinician make a fast and accurate diagnosis with the power of the Marquette* 12SL analysis program. It's the proven[†] diagnostic support you need, in an ECG system that's intuitive and easy to use.

Really, really smart.





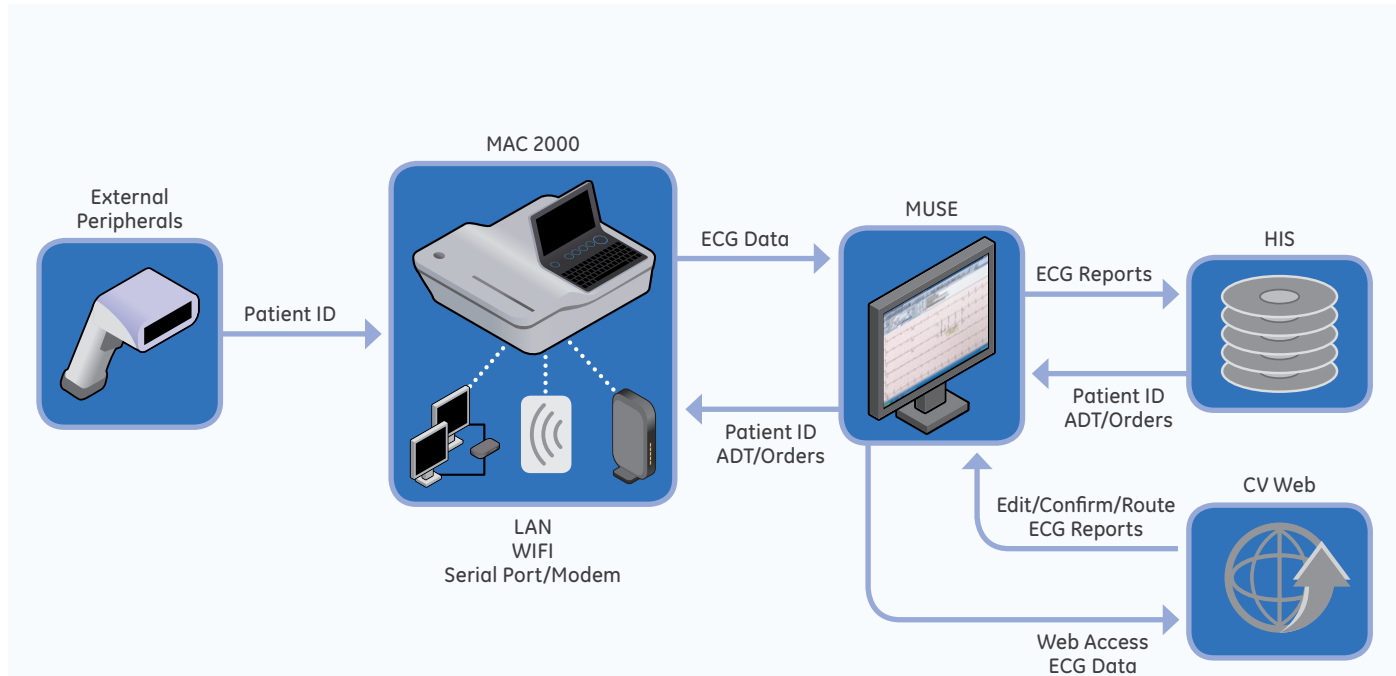
Simple is productive.

- Automatic capture of 10-second ECGs with one-touch operation
- Easy-to-read 7" color display is configurable to meet your needs
- On-screen preview of 12-lead waveforms and ECG results helps streamline review and diagnosis
- Multiple connectivity and export options for easy data access, transfer and storage
- Marquette 12SL ECG analysis program for clinical decision support
- Available in exercise testing configuration to meet your facility's diagnostic needs



The MAC 2000 helps caregivers be productive from the first ECG. Available tools such as HookUp Advisor* allow clinicians to identify a quality signal before acquisition, helping avoid costly repeat ECGs. It's all part of a smarter, simpler workflow that lets caregivers do more in less time. And you'll be able to do it all from day one.

Simple is connected.



Hospitals need streamlined data connectivity. The MAC 2000 connects seamlessly with your existing hospital environment, immediately making it easier to acquire, print, store, and transmit ECG data. It's your link to productivity, however you need to connect.

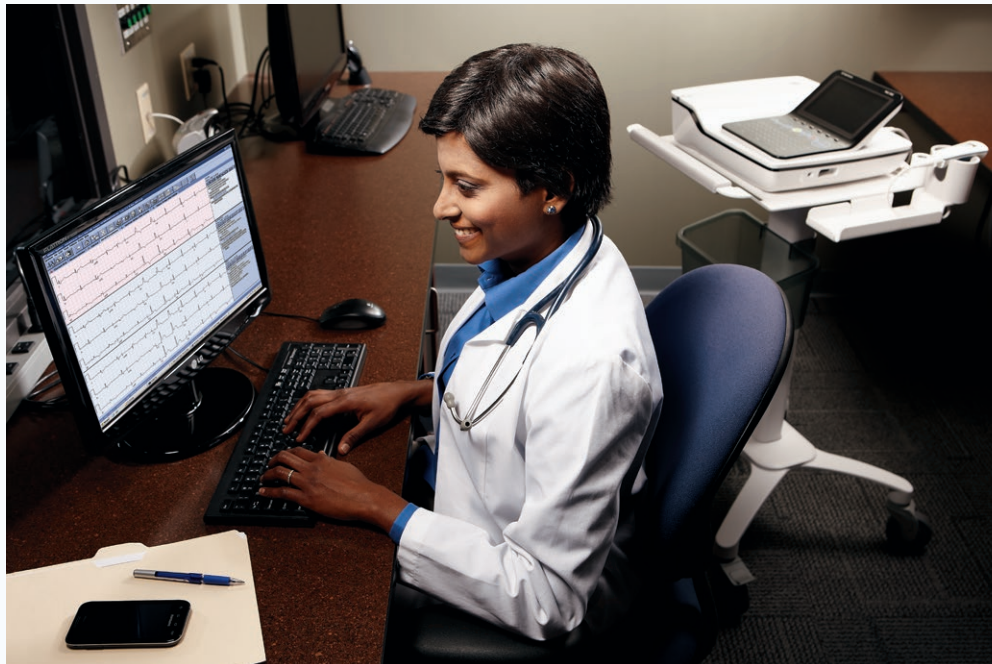
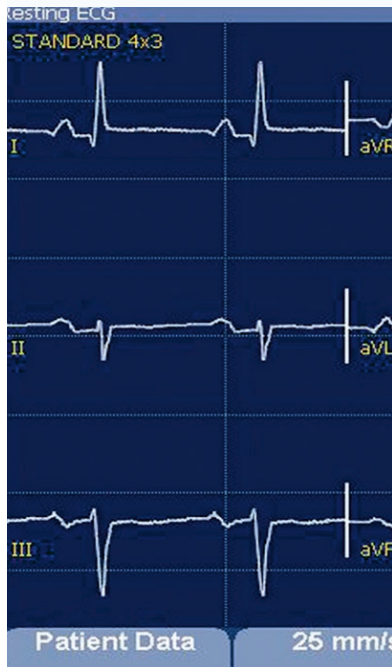


- Supports paperless workflow with options for bi-directional communication, including Orders and ADT query features
- Seamless connectivity with the MUSE* cardiology information system or the CardioSoft* program—or send reports to a shared directory on a PC
- Connectivity with LAN, Wi-Fi, serial port, modem, or SD card
- PDF and XML export capabilities
- Internal storage for up to 200 ECGs

Simple is reliable.



- Marquette 12SL ECG analysis program with measurement and interpretation
- Arrhythmia detection
- ACI-TIPI algorithm for acute cardiac ischemia
- Gender-specific interpretation provides improved sensitivity to Acute Myocardial Infarction in women
- RR analysis for detection of patterns in heart rate variability†



The MAC 2000 delivers the diagnostic insights caregivers need. Empowered with the Marquette 12SL analysis program, the system provides a complete set of analysis tools you can trust, because they've been rigorously validated against clinically correlated databases with multiple patient populations. It's clinical decision support made simple.

†RR analysis is not available in all regions. Please contact your local GE Healthcare representative for more information.

Simple is supported.

The MAC 2000 makes it simple the moment you open the box. Easy installation won't disrupt your hospital operations. The familiar, intuitive interface with full keyboard means physicians and nursing staff won't need days of training—more like minutes.

And because we know training needs can change with your team, we offer convenient computer-based training tools for on-demand learning.

Expert GE Healthcare service and support are always just a click or call away—our extensive network of trained service pros is ready so you don't have to wait for help. Many times service needs can even be resolved remotely, keeping downtime to a minimum. It's another way the MAC 2000 embraces simplicity to give you a hassle-free experience.





Simple is
here.

It's time to make ECG simpler. To learn more about the MAC 2000 ECG, contact your GE Healthcare representative or visit www.gehealthcare.com.

©2013 General Electric Company – All rights reserved.

General Electric Company reserves the right to make changes in specifications and features shown herein, or discontinue the product described at any time without notice or obligation. Contact your GE representative for the most current information.

GE and GE Monogram are trademarks of General Electric Company.

*CardioSoft, HookUp Advisor, MAC, Marquette, and MUSE are trademarks of General Electric Company.

All other product names and logos are trademarks or registered trademarks of their respective companies.

GE Healthcare, a division of General Electric Company

About GE Healthcare

GE Healthcare provides transformational medical technologies and services that are shaping a new age of patient care. Our broad expertise in medical imaging and information technologies, medical diagnostics, patient monitoring systems, drug discovery, biopharmaceutical manufacturing technologies, performance improvement and performance solutions services helps our customers to deliver better care to more people around the world at a lower cost. In addition, we partner with healthcare leaders, striving to leverage the global policy change necessary to implement a successful shift to sustainable healthcare systems.

Our “healthymagination” vision for the future invites the world to join us on our journey as we continuously develop innovations focused on reducing costs, increasing access and improving quality around the world. Headquartered in the United Kingdom, GE Healthcare is a unit of General Electric Company (NYSE: GE). Worldwide, GE Healthcare employees are committed to serving healthcare professionals and their patients in more than 100 countries. For more information about GE Healthcare, visit our website at www.gehealthcare.com.

GE Healthcare

P.O. Box 900, FIN-00031 GE, Finland

GE Direct United Kingdom: +44 (0)800 0329201

www.gehealthcare.com



GE imagination at work